

Why is a clear right-of-way important?



A clear right-of-way improves power quality, reliability and safety.

We all enjoy trees, but when they interfere with power lines, reliability and safety are compromised. That's why it's important to remove trees, branches and brush from the right-of-way.

Trees and vegetation in the right-of-way:

1. Cause power outages
2. Cause lights to blink
3. Obstruct visual inspections, making repairs difficult and costly
4. Block access for maintenance and repairs, causing delays
5. Waste electricity by drawing it into the ground
6. Become a fire hazard
Scenic Rivers Energy Cooperative works with the DNR to help prevent forest fires by removing trees near high-voltage power lines.
7. Become a safety hazard for utility workers and members
Children and adults should never climb, trim or touch trees that contact power lines.



Clear rights-of-way give line crews the ability to respond to storm damage with minimal disruption of electricity.

Clear rights-of-way give line crews safe access to the power lines.

Co-op linemen don't have to cut their way in to reach repair areas and they are able to restore power more quickly for you, our members.

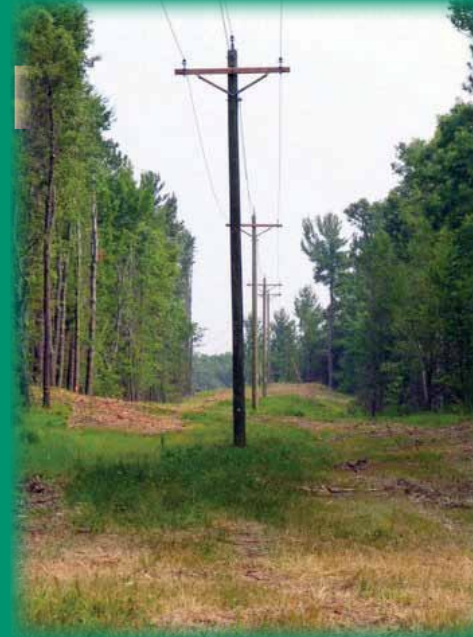
For more information, contact:

800-236-2141
Extension 107

March 2011



Scenic Rivers Energy Cooperative & Right-of-Way



A clear right-of-way reduces power outages and improves safety for everyone!



What is the right-of-way program?



When trees interfere with power lines, members experience outages. Trees are a major cause of power outages.

Scenic Rivers Energy Cooperative's right-of-way (ROW) program requires removing vegetation, typically, from a 20-foot corridor on both sides of power lines to ensure safe conditions and reliable power.

Now that the initial clearing is done, Scenic Rivers Energy Cooperative continues its commitment to the rights-of-way with regular maintenance.

We appreciate your cooperation.

How is the right-of-way cleared?



The right-of-way is cleared by cutting, trimming, mowing and where permissible, applying herbicides.

Scenic Rivers Energy Cooperative treats all members equally when removing vegetation.

In most cases, all shrubs, brush and trees are removed under primary (main), high-voltage overhead power lines. They are also removed, as necessary, underneath and around secondary, low-voltage power lines that bring power from the transformer to your meter.

Cutting and trimming is done by trained, professional utility tree trimmers using specific and proven standards typical to the industry.



The electric system is regularly inspected for dead, dying and leaning danger trees. When found, they are marked (left) and then trimmed or removed to eliminate threat to power lines.

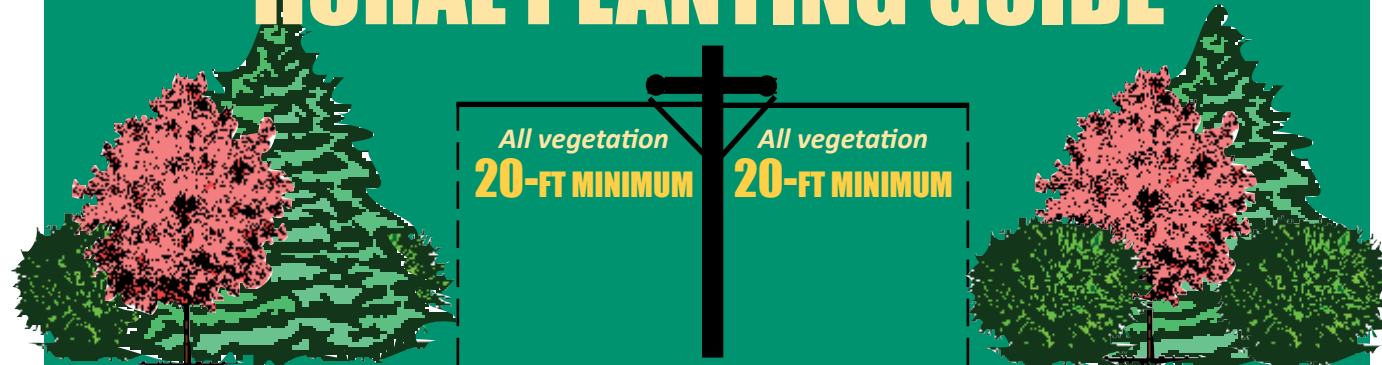


All vegetation must be planted away from power lines, so that mature branches cannot grow into the right-of-way. Vegetation that is planted or grows into the right-of-way needs to be cut or trimmed. Vegetation within 20 feet on either side of the power line is at risk for removal due to power line maintenance, repair and replacement. For safe, reliable electric service, follow these guidelines:

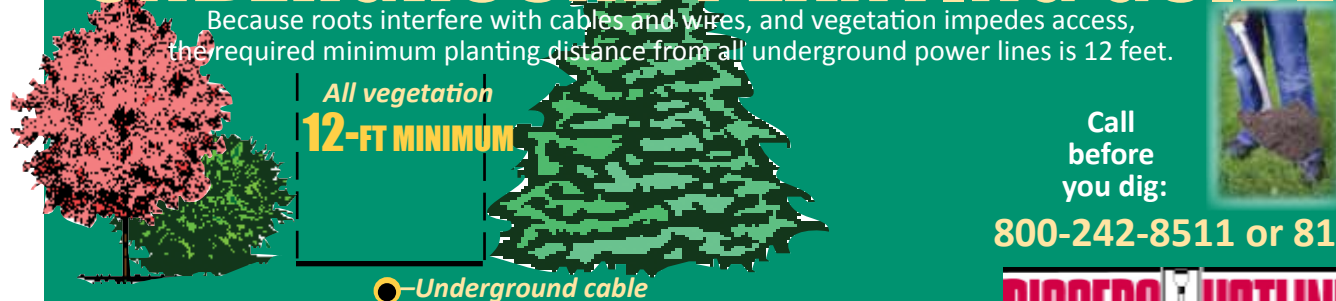
YARD PLANTING GUIDE



RURAL PLANTING GUIDE



UNDERGROUND PLANTING GUIDE



Also, keep areas around electric meters and green transformer boxes clear of vegetation and obstructions that could limit access for repairs.



What happens to the cut wood and chips?

Logs are the property of the landowner. Branches and small debris are left to decompose where they are cut. In maintained yard areas, branches and small debris are chipped and removed unless otherwise requested by the member. If you would like your name added to a waiting list for wood chips, we may be able to bring a load to your property on a first-come, first serve basis when we're cutting in your area. Chips are mixed wood, leaves and pine needles. **For chips or wood information, contact: 800-236-2141 ext. 107.**

What happens if I plant in the right-of-way?

In the best interest of all members, new plantings are not allowed in the right-of-way. Upon notification, plants need to be transplanted or removed.

Can power lines be buried?

In certain situations, upon landowner request, overhead power lines may be reconstructed underground. Contact the co-op about necessary costs, easements and other requirements.