

Since 1940

WISCONSIN ENERGY *Cooperative* NEWS

March 2024



PRIZE DRAWINGS

**(1) \$100, (3) \$50, (10) \$25,
& \$5 for all attendees.**

Must be present to win.
Bill credit applied to
electric bill.

SCHOLARSHIP DRAWINGS

(27) \$1,000

Must be present
to win. Application
details inside.

BALLOT PRIZE DRAWINGS

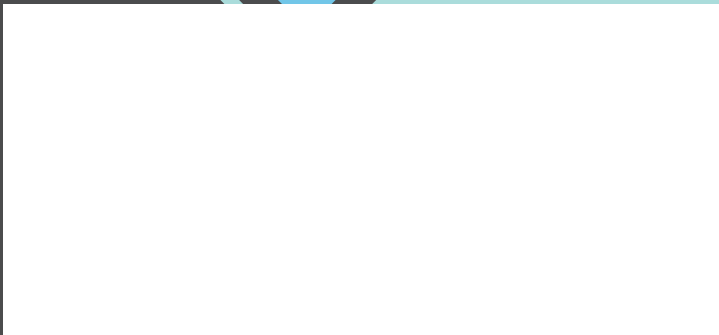
(6) \$50

Bill credit drawing for those
who mailed in ballot.
Need not be present
to win.

87th Annual Meeting

Saturday, April 13

Youth & Ag Building
Lancaster



NOTICE OF ANNUAL MEETING

SCENIC RIVERS ENERGY
COOPERATIVE

APRIL 13, 2024

GRANT COUNTY YOUTH AND
AGRICULTURE BUILDING
LANCASTER, WISCONSIN

The 87th Annual Meeting of the members of the Scenic Rivers Energy Cooperative will be held at the Grant County Youth & Agriculture Building in the City of Lancaster, Wisconsin, beginning at 9:30 o'clock a.m. on Saturday, the 13th of April 2024, to take action upon the following matters:

1. Determination of quorum.
2. Approval of minutes of 2023 annual meeting.
3. Election of three (3) directors, they being the directors to represent Districts 3, 4 and 8.
4. Unfinished business.
5. New business.
6. Adjournment.

Dated this 14th day of March 2024.



Chuck Simmons, Chairman

RULES OF ORDER FOR OFFICIAL BUSINESS MEETING

1. The meeting will be conducted in accordance with the current edition of Robert's Rules of Order Newly Revised and under the following special Rules of Order.
2. Members wishing to speak are to give their names and the districts or towns in which they are members and will be recognized by raising their hands.
3. Only members will be allowed to speak for two minutes on each issue and for one time only, except that an additional two minutes may be granted with the approval of the membership.
4. Voting for directors shall only be by absentee signed ballots or ballots cast in person at the meeting. Voting to approve other motions or resolutions and on any parliamentary procedural matters shall only be in person at the meeting and shall be by unanimous consent or by majority vote, (unless otherwise required by law or Robert's Rules of Order), with a show of voting cards.
5. In the interest of time, the Board-appointed, disinterested persons may begin counting the absentee signed ballots prior to when balloting is closed.
6. Any member wishing to reserve the right to present an advisory resolution at the annual meeting shall deliver a copy of the proposed resolution to the Cooperative at least five (5) business days prior to the meeting, that is, not later than close of business on April 4, 2024, so as to allow consideration of the proposed resolution and determination of what information should be presented to the membership for an informed decision on the issue.
7. No signs or handouts will be permitted within the place of the meeting, except such handouts as required for the official conduct of the Annual Meeting. No handouts made available outside of the building will use the name of the Cooperative, its letterhead or logo to imply that the Cooperative supports or opposes any candidate for director or any resolution or any position on any issue.
8. No demonstrations shall be held within the place of the meeting.
9. The Cooperative reserves the right to limit in-person attendance if and to the extent it is necessary to comply with any state or local regulations or orders governing large meetings.



ANNUAL MEETING PROGRAM

April 13, 2024



9:00 a.m. Registration Begins
Focus on Energy Booth

9:30 a.m. Call Meeting to Order
Introduction of Directors and Guests
Determination of Quorum
Minutes of the Last Annual Meeting
Election of Directors
Audit Committee Report
Treasurer's Report
Dairyland Power Cooperative Report
CEO Report
Unfinished Business
New Business
Prize Drawings
Scholarship Winners
Election Results
Adjournment
Lunch as a To-go Box

We will be drawing the scholarship and prize winners at the end of the meeting.

Scholarship Drawing

Winners must be present to win.

Additional information on the scholarship is inside.

Ballot Prize Drawing

Members who mailed in their ballots will be entered to win one of the following certificates that will be applied directly to their electric bill. Members do not need to be present to win.

- Six (6) \$50.00 certificates

Prize Drawing

Members who attend our annual meeting will be entered to win one of the following certificates that will be applied directly to their electric bill. Must be present to win.

- One (1) \$100.00 certificate
- Three (3) \$50.00 certificates
- Ten (10) \$25.00 certificates

All members who attend will receive a \$5.00 bill credit on their next monthly statement.



CEO REPORT

Steve Lucas, CEO

The Greek philosopher Heraclitus is credited with the idea that the only constant in life is change.

I've borrowed from Heraclitus' famous

musings frequently over the years, as Scenic Rivers Energy Cooperative has faced many changes in my time as CEO. In recent years especially, we've seen longtime employees transition to a well-earned retirement. We've seen changes in our fuel mix as more renewable energy sources have come on-line. We've seen major shifts in how we do business thanks to a two-year pandemic that upended life. We've even built and moved into a new headquarters building.

Through it all, we've managed to adapt and stay focused on our mission of serving the community as a reliable and innovate provider of energy and related services. I'm very proud of our team for staying focused on our mission throughout some tumultuous times.

That said, I'm also very pleased to be able to veer ever so slightly away from Heraclitus' theme of constant change, at least for this year. Not that things have remained static, or that we haven't faced challenges. This past year we had more than our share of heartbreak, as we mourned the loss of an employee who died way too soon. His absence is a major change that we're all still adjusting to.

However, as far as operations go, things have stabilized somewhat. We are settled and humming along in our new building, and our system is in good shape. Outages are down thanks in large part to our continued efforts in system maintenance and line clearing. The pandemic-related supply-chain issues that impeded our ability to secure equipment have abated. Rates have remained stable.

We are, of course, still facing some changes—it's inevitable—but the changes I'm reporting on this year come with opportunities for our members to control their costs.

This spring we'll be switching up how we bill our members to better align with how we are billed for wholesale energy from our wholesale power provider, Dairyland Power Cooperative. This change reflects the fact that in today's world, the cost of energy is determined not just by how much energy is ultimately used, but by when we use it. The official way to describe these two factors is consumption and demand. Consumption is the amount of electricity a member uses over a period of time, measured

in kilowatt-hours. Demand is the amount of electricity a member requires at a single moment of time.

The energy we use is managed by the Midcontinent Independent System Operator (MISO), which coordinates the dispatch of energy resources to meet demand in 15 states and parts of Manitoba, Canada. If the demand for electricity is high simultaneously across the region, it can become very challenging to provide adequate supply. As more and more baseload plants are retired and replaced by renewable resources, which are intermittent and can't be relied upon to meet demand in all situations, that challenge has become even greater.

As a result, we are now billed for wholesale power according to our demand rather than our consumption—the

In today's world, the cost of energy is determined not just by how much energy is ultimately used, but by when we use it.

greater the demand, the higher the cost. We are changing our residential billing accordingly.

This is largely an administrative change. Most residential consumers are unlikely to see a noticeable difference—if any difference at all—in their monthly bills. The benefit of this switch is that it may help you to become more

aware of how and when you use your energy, which gives you some control over your usage and ultimately costs.

Times of highest demand fluctuate, but generally, demand is highest in winter during the early evening hours when everyone is arriving home from work and school fixing dinner, getting caught up on household chores, etc. In the hot summer months the peak demand typically shifts to the afternoons when air conditioners are running full blast.

The key to lowering demand is to shift some of your electricity-intensive activities to times when the demand for electricity is lower. Can you wait until bedtime before starting up your dishwasher? Can you avoid running multiple major appliances at once? Can you charge your electric vehicle at night instead of right when you get home from work?

All of these little steps help lower the overall demand for electricity, which helps keep our rates stable. Let's work together to try to keep this stable and steady pace going.

**2024 EMPLOYEE
SERVICE
MILESTONES**

5 YEARS

Jordan Wagner

20 YEARS

Chad Olmstead

25 YEARS

Leann Handel
Tammy Stoney



CHAIRMAN REPORT

Chuck Simmons, Chairman

On the previous page, CEO Steve Lucas shared how the upcoming changes to our residential billing can help make you more aware of your energy use so you can make lifestyle changes that will help lower your costs. As he explained, these billing changes reflect the fact that we are now charged for wholesale power according to *when* we use the most energy rather than *how much* energy we use overall.

I am going to back up his message with a reminder that while you certainly should pay attention to when you use the most energy, you should also still be aware of how much you really use. You might be surprised to learn where you're wasting energy, and how simple it can be to cut back.

For example, one of the most common energy-saving tips you'll see calls for adjusting your thermostat a degree or two to the lowest (in winter) and highest (in summer) setting you're comfortable with, and to adjust it even more overnight or when you're away from home. This tip, of course, only works if you actually remember to turn your thermostat up or down. If you're prone to forgetting, install a programmable thermostat and set it accordingly.

Also, you'll lose any savings you might have gained by turning your thermostat down a bit while you're gone if you crank it up extra high when you return home. Contrary to common belief, turning up a thermostat to an extremely high temperature won't heat up your home any faster. In fact, you'd actually be making your furnace work even harder.

Another usage tip to keep in mind involves fans. Ceiling fans, which use much less electricity than air conditioners, can keep you comfortable enough that you might be able to do without your cooling system, or at least turn it up a bit.

However, fans don't actually change the room temperature; rather, they create a "wind chill effect" from the breeze of the moving blades brushing against your skin. Therefore, if no one's in a room but a fan is still running, all it's doing is using energy unnecessarily.

Also, if you forget to switch your fan blades seasonally your fan won't be doing its intended job. Make sure the blades are turning counterclockwise in the summer. This way, the blades create a downdraft, pushing the cooler air down. In the winter, switch the blades to turn clockwise, which creates an updraft and pushes warmer air back down.

You might be surprised to learn where you're wasting energy, and how simple it can be to cut back.

These are just a couple simple things to be aware of when it comes to saving energy. Keep watching this magazine, our *Light Notes* newsletter, and our Facebook page for more energy-saving tips.

Finally, with the spring storm season coming up, I'd like to close with a safety message regarding vehicle accidents involving power lines. If your vehicle should come into contact with a power line, stay in your vehicle, call 911, and warn others to stay away. DO NOT get out of your car. Wait for utility personnel to arrive and ensure the line is de-energized. If the line is energized and you step out of the car, your body becomes a path for electric current to the ground. If you must get out of the car because it's on fire, cross your arms and make a clean jump out. Do not touch the vehicle and the ground at the same time. Hop with your feet together as far away from the vehicle as possible.



Limited number of \$1,000 scholarships are available to seniors in high school, seniors in a home-schooled program, and non-traditional students entering their freshman year in a post-secondary accredited program.

Dependents of active members (parent or guardian only) or active members of SREC will be eligible. (Dependents of employees and directors are eligible as long as they are active members of SREC).

To be eligible to win, students must be present at the SREC Annual Meeting held on April 13, 2024.

SCENIC RIVERS ENERGY COOPERATIVE

2023 FINANCIAL STATEMENTS

Unaudited Comparative Balance Sheet

	<u>12-31-2022</u>	<u>12-31-2023</u>
Total Utility Plant	\$100,096,209	\$104,230,945
Less Reserve for Depreciation	23,985,252	25,909,643
Utility Plant - Less Reserve	\$ 76,110,957	\$ 78,321,303
Inv. In Associated Organizations	\$ 15,176,142	\$ 15,818,364
Other Investments	15,497,562	12,443,845
Total Investments	\$ 30,673,704	\$ 28,262,209
Accounts Receivables	\$ 3,084,571	\$ 2,728,729
Materials & Supplies	738,910	892,144
Other Current Assets	92,066	228,674
Total Current Assets	\$ 3,915,547	\$ 3,849,546
TOTAL ASSETS	\$110,700,208	\$ 110,433,058
Long Term Debt-RUS	\$ 55,223,345	\$ 53,257,632
Long Term Debt-CFC & CoBank	805,605	732,004
Current & Accrued Liabilities	4,973,363	4,860,364
Consumer Deposits	216,815	209,783
	\$ 61,219,128	\$ 59,059,783
Patrons Capital & Oper. Margins	\$ 44,551,898	\$ 47,531,048
Other Margins & Equities	4,929,183	3,842,227
	\$ 49,481,080	\$ 51,373,275
TOTAL LIABILITIES & EQUITY	\$110,700,208	\$110,433,058

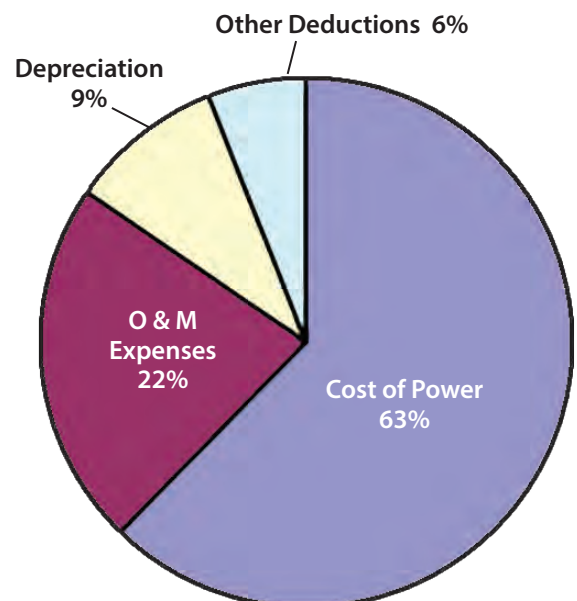
Unaudited Comparative Operating Statement

	<u>12-31-2022</u>	<u>12-31-2023</u>
Operating Revenues	\$ 32,016,935	\$ 32,449,720
Cost of Power	\$ 19,451,518	\$ 18,849,610
Operations and Maintenance	4,244,745	4,702,656
Consumer Accounts	277,286	269,396
Consumer Service & Information	264,995	221,975
Sales Expense	82,201	64,424
General & Administrative	1,980,424	1,842,018
Total Operations & Maintenance Expense	\$ 26,301,169	\$25,950,079
Depreciation	\$ 2,769,632	\$ 3,083,927
Taxes	467,746	442,313
Interest	1,574,464	1,573,196
Other Deductions	2,492	2,635
Total Cost of Electric Service	\$ 31,115,503	\$ 31,052,151
Operating Margins	\$ 901,432	\$ 1,397,569
Non-Operating Margins	2,060,952	659,197
Income from Equity Investments	758	(119)
Dairyland & Other Capital Credits	844,276	1,034,768
Total Margins	\$ 3,807,418	\$ 3,091,415

Highlights

	<u>2021</u>	<u>2022</u>	<u>2023</u>
Members Served	11,648	11,704	11,775
Miles of distribution line	3,523	3,532	3,543
Number of Substations	23	23	23
Connected meters	14,405	14,482	14,593
Density- meters per mile of line	4.09	4.10	4.12
kWh sold	225,983,518	230,400,378	223,909,526
Total energy sales	30,682,459	32,106,083	31,950,033
Ave. kWh usage per member, per month	1,617	1,640	1,585
Avg bill per member, per month	219.51	228.60	226.11
Full-time employees	35	37	35
Capital Credits returned to date (including estate settlements)	37,942,376	38,885,089	40,036,665
Service area	Grant, Lafayette and Crawford counties; part of Green, Iowa, Richland, Vernon in Wisconsin; Jo Davies and Stephenson in Illinois		
Board meeting day	Usually the last Thursday of the month		
Number of director districts	Nine		

2023 Expenses





MINUTES OF THE ANNUAL MEETING

Scenic Rivers Energy Cooperative | Held on April 15, 2023

The 86th annual meeting of the Scenic Rivers Energy Cooperative (SREC) was held on Saturday, April 15th in person at the Youth & Ag Building in Lancaster, WI and via the internet. Chairman Simmons called the meeting to order at 9:30 a.m. The 2023 meeting rules of order were posted. Chairman Simmons allowed members time to read and review the rules of order.

Jean Opperman of Bagley gave the invocation.

Attorney Jessica Shrestha of Fredrikson & Byron P.A. proceeded with the business portion of the meeting. It was determined that there was a quorum, as 120 members were registered and present on site at the time the meeting was called to order.

Attorney Shrestha stated the Notice of Annual Meeting was printed in the annual report and posted at each SREC office. We received notarized proof of mailing from *Wisconsin Energy Cooperative News (WECN)* that the March 2023 issue of the *WECN* magazine contained a printed notice of the annual meeting.

Attorney Shrestha asked the membership to approve the previous annual meeting minutes held on April 9th, 2022, as printed in the annual report on page 18 and posted during the meeting. The membership unanimously approved the minutes as printed and posted.

The election process was handled by Attorney Shrestha. A call for any further in-person ballots was made and those ballots were collected and included with the mail-in ballots. The staff proceeded with tallying the ballots for the elections in Director Districts 1, 5, and 6.

On behalf of the Audit Committee, Mary Jo Johnsrude reported on the fiscal year 2022 Audit Committee Meeting held on March 30th, 2023.

Secretary-Treasurer Steve Carpenter presented the financial report that highlighted key points of interest in 2022 for SREC.

CEO Lucas presented his annual report on the state of the cooperative.

Attorney Shrestha explained that there was no unfinished business from the previous annual meeting. She advised that there was no new business.

Staff member Julie Ostby announced the winners of the \$100, \$50, and \$25 door prizes.

Staff member Julie Ostby announced the 52 recipients of the \$1,000.00 scholarships.

Attorney Shrestha then announced the results of the director elections, indicating that incumbents Marcus Saegrove (District 1), Delbert Reuter (District 5) and Jack Larson (District 9) were re-elected, by the following votes:

District 1

Marcus Saegrove received 193 votes.

District 5

Delbert Reuter received 224 votes.

Lisa Mayne received 132 votes.

District 9

Jack Larson received 159 votes.

All registered members who were present at the Annual Meeting will receive a \$5.00 credit on their May statement.

Chairman Simmons asked for any further business – hearing none, the meeting was adjourned at 10:20 a.m.



MEET YOUR DIRECTOR CANDIDATES

VOTING INSTRUCTIONS for DISTRICTS 3, 4 and 8:

As a member of Scenic Rivers Energy Cooperative, you have the opportunity to elect a director for your district to represent your interests on the Board of Directors. The ballot will be sent to your billing address with the names of all candidates. For the ballot to be counted, please follow the step-by-step instructions below. If you mail in your ballot, you will automatically be entered in a drawing to win a \$50.00 credit on your energy bill! The drawing will take place during our annual meeting and you do not have to be present to win.

Mail-in Ballot Instructions:

- 1) Mark which candidate you want to represent your district.
- 2) Place the ballot inside the return envelope with the co-op's address.
(Please do not include your electric bill payment in this envelope since it may not be opened until April 13.)
- 3) Seal the envelope.
- 4) On the outside of the envelope, SIGN your name on the line stating "Member Signature" located at the upper left-hand corner of the envelope.

Ballots are only counted if you SIGN your outer envelope!

- 5) All ballots must be mailed or delivered so that the cooperative office has received them by 4:00 p.m. on Friday, April 12, 2024.

Advance authorization must be given for non-individual members of the cooperative, such as churches, schools, cooperatives, governmental bodies or corporations, to vote at the Annual Meeting. Please contact our office if you did not receive/return an authorization notice.

Thank you for taking an interest in the activities of your cooperative.

DISTRICT 3:

CHUCK SIMMONS

63476 Lohmann Lane, Eastman, WI 54626



Chuck Simmons and his wife, Marlene, live in Eastman Township, Crawford County. Members of Scenic Rivers Energy Cooperative since 1999, Chuck and Marlene have been married for 51 years and soon to be 52 in May. They have three children, Emily (Brian) Joachim, Ben (Dana) Simmons, and Brian (Katie) Simmons. They have been blessed with nine grandchildren ranging in age from 8 to 21 years.

The Simmonses are members of St. Wenceslaus Parish in Eastman, where Chuck serves on the endowment committee. He is also a board member of Crossing Rivers Health foundation. Chuck has been a member of the Knights of Columbus for the past 40-plus years in various council positions and chairman of the statewide committee on Helping People with Intellectual Disabilities. He graduated from the University of Wisconsin-Platteville with a Bachelor of Science degree in education. After 28 years as an agent and district sales manager for American Family Insurance, he retired on December 31, 2013. "Since retirement I've found that I have more time to devote to my duties as a director and board chairman of Scenic Rivers Energy," Chuck said.

He has completed a course of study through National Rural Electric Cooperative Association (NRECA) and is recognized as a Credentialed Cooperative Director. He has also received Board Leadership Certification and Director Gold Certification. In 2018 Chuck was elected to the NRECA board of Directors to represent cooperatives in Wisconsin.

"I would be honored to serve Scenic Rivers Energy Cooperative as your District 3 director for the next three years and ask for your support and vote," he said.





DISTRICT 4:

ELLEN CONLEY

12270 Roger Hollow Rd., Fennimore, WI 53809



My husband, Dennis, and I own our farm of 240 acres with 170 tillable acres in the Mt. Ida Township, city of Fennimore, and have been married 44 years. We have been SREC members for 40 years. We have two children—daughter, Emilee (John) Scheid, and son, Josh (Andrea)—and our youngest daughter, Lacey, died in 1985.

We have four beautiful grandkids—Scheids: Elizabeth, 16; Stephen, 14; and Sarah 11; and Conley: Teagan Marie, 3 months old. Our children and grandkids all live in Minnesota.

Our family hosted the Grant County Dairy Breakfast in 1994 and in 1996 was selected as WGLR Farm Family of the Year. We now raise Holstein steers and cash crop; we no longer milk cows due to a barn fire in 2012. I enjoy my husband, family, friends, lawn and calf care, fieldwork, our farm kitties, bookkeeping for the farm, and thrift shops/garage sales.

I have served as president of the Grant County Chapter of Wisconsin Right to Life for 13 years (1998–2011) and was secretary a couple years before that. We enjoy going to mass at the local Catholic Church. I am a member of the Homemakers-Oak Hill Climbers and served as president for three years and have helped organize the annual Have A Heart Quilting Bee, which was held in Grant County. We are Fennimore FFA Alumni members (received an honorary degree in 1999).

I will always be **“plugged in”** to hear your concerns and comments so we can make the cooperative even stronger. I take this role representing District 4 as a director very seriously, and will give SREC, its members and employees the respect they deserve for their hard work. **Your “megawatts” of support past and future for allowing me to represent the co-op as your director on the board are very much appreciated.** I have learned a lot the past 21 years and am still learning every day! I am proud to be part of this team that we call family—our cooperative members are our business. I am looking forward to seeing you all at the annual meeting!

Thank you and God bless!

PEGGY SCHMITT

18283 Doyle Rd., Blue River, WI 53518



My husband, Larry, and I have lived on our Blue River tree farm since 1976 and have been members of the electric co-op ever since then. While raising our five children, we also focused on serving our community through our parish, the Blue River fire department, and 4-H. In 1979, I began working with National Catholic Society

of Foresters (now 1891 Financial Life), a not-for-profit life insurance and financial services company. For the past 14 years, I have held a position on their board of directors, serving as the board chair for the past 10 years.

Community service took a new turn for me in 2008 when a friend and I founded Riverway Communities of Hope. RCoH is a non-profit entity that provides funding so that rural youth can get mental health and substance abuse treatment if their families are unable to afford it. Since we started providing this assistance, Riverway Communities of Hope has paid for appointments (or transportation to treatment) 2,566 times for a total expenditure of \$236,753. RCoH has assisted youth in 20 different school districts of Southwest Wisconsin. I am a co-founder, volunteer, grant writer, and the treasurer for RCoH.

My current involvement with RCoH, as well as my service on the board of a community-based and member-owned insurance company, has provided me with extensive experience. My board experience includes serving on committees for governance, bylaws, finance and investments, and personnel.

If elected to the Scenic Rivers Energy Cooperative Board, I will serve our community in a new way. I will bring to the SREC board the knowledge, skills, and experience I have gained in previous corporate and volunteer opportunities.



MEMBER PHOTO OF THE MONTH

This month's featured photo is “Rowdie waiting for his driver,” taken by Bobbi Gofus of Bagley.

DISTRICT 8:

STEVE CARPENTER

10548 Palmer Road, Darlington, WI 53530



Steve Carpenter and his wife, Lisa, along with their four children Cody (Carrie Jo), Colton (Danielle), Carson (Alyvia), and Cora, and with four wonderful grandchildren, Chloe, Cash, Wrenley, and Brooks, own and operate Redrock View Farms in Darlington Township. They currently milk 500 cows and

operate 1,700 acres of crop ground. A lifelong member of SREC, Steve says the co-op has been very helpful during the expansions to their farming operations. He has also worked with Focus on Energy and plans to continue working with that program. Being selected as the WGLR Farm Family of the year in 2017 and the Tri-State Farm Family of the year in 2020 shows that family and community involvement are very important to Steve.

Steve believes that SREC needs to promote economic development in ways to manage rising energy costs and to meet the growing demand for electricity while protecting the environment. He has been involved in some renewable energy projects and believes in the need to look for cost-effective and environmentally sound ways to produce alternative electricity.

"The key for success of any cooperative or business is people and service," Steve said. "The cooperative needs to be able to meet the needs of its members at a competitive price and provide service from good employees. In the past 12 years, serving as a director and currently secretary-treasurer for our cooperative, I have learned a lot about the operations of SREC. I look forward to continuing to work with my fellow directors for the continued success of your cooperative as we work through the future challenges we will face. If re-elected, I will continue to work hard to represent District 8. Thank you for your support and vote."

NONDISCRIMINATION STATEMENT

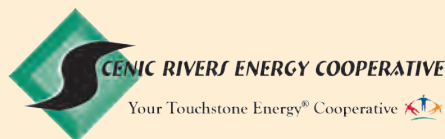
In accordance with Federal civil rights law and U.S. Department of Agriculture (USDA) civil rights regulations and policies, the USDA, its Agencies, offices, and employees, and institutions participating in or administering USDA programs are prohibited from discriminating based on race, color, national origin, religion, sex, gender identity (including gender expression), sexual orientation, disability, age, marital status, family/parental status, income derived from a public assistance program, political beliefs, or reprisal or retaliation for prior civil rights activity, in any program or activity conducted or funded by USDA (not all bases apply to all programs). Remedies and complaint filing deadlines vary by program or incident.

Persons with disabilities who require alternative means of communication for program information (e.g., Braille, large print, audiotape, American Sign Language, etc.) should contact the responsible Agency or USDA's TARGET Center at (202)720-2600 (voice and TTY) or contact USDA through the Federal Relay Service at (800)877-8339. Additionally, program information may be made available in languages other than English.

To file a program discrimination complaint, complete the USDA Program Discrimination Complaint Form, AD-3027, found online at http://www.ascr.usda.gov/complaint_filing_cust.html and at any USDA office or write a letter addressed to USDA and provide in the letter all of the information requested in the form. To request a copy of the complaint form, call (866) 632-9992. Submit your completed form or letter to USDA by:

- (1) mail: U.S. Department of Agriculture
Office of the Assistant Secretary for Civil Rights
1400 Independence Avenue, SW
Washington, D.C. 20250-9410;
- (2) fax: (202) 690-7442; or
- (3) email: program.intake@usda.gov

USDA is an equal opportunity provider, employer, and lender.





Steve Lucas, CEO

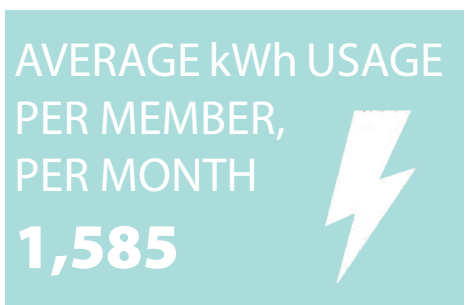
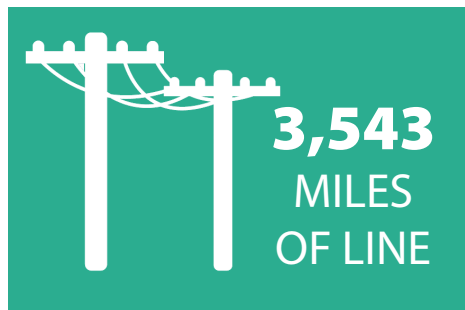
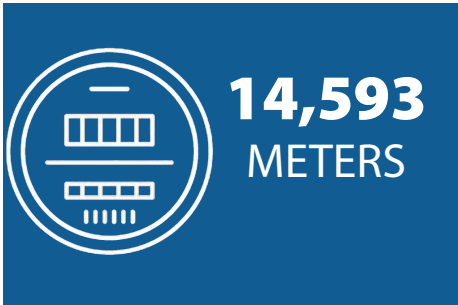
206 County Road K
Lancaster, WI 53813
lancaster@srec.net

300 Barth Drive
P.O. Box 127
Darlington, WI 53530
darlington@srec.net

15985 St. Hwy. 131
Gays Mills, WI 54631
gaysmills@srec.net

608-723-2121 • 800-236-2141 • www.sre.coop  
This institution is an equal opportunity employer and provider

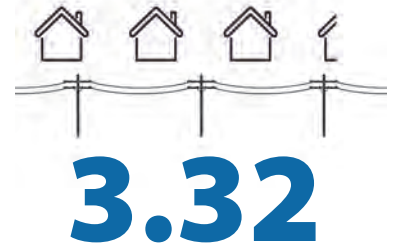
GET TO KNOW SCENIC RIVERS ENERGY COOPERATIVE



7 COOPERATIVE PRINCIPLES

1. Open and Voluntary Membership
2. Democratic Member Control
3. Members' Economic Participation
4. Autonomy and Independence
5. Education, Training & Information
6. Cooperation Among Cooperatives
7. Concern for Community

MEMBERS PER
MILE OF LINE

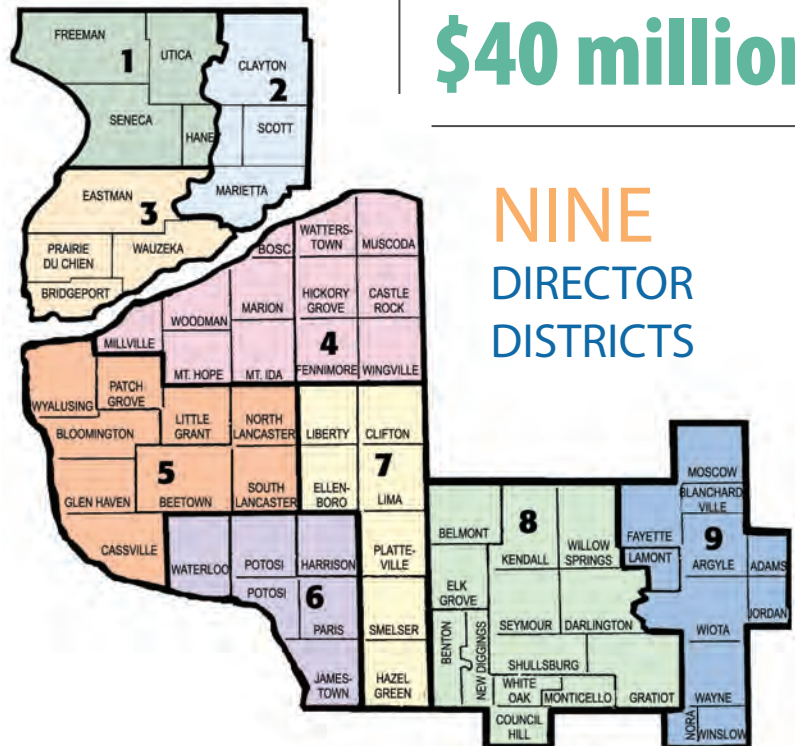


CAPITAL
CREDITS
RETURNED
TO MEMBER-OWNERS:



\$40 million

NINE
DIRECTOR
DISTRICTS





Vision Statement

Scenic Rivers Energy Cooperative is committed to being the area's most reliable provider of energy and related services. Our Cooperative will strive to identify ways to improve the quality of life for our community.

Mission Statement

Scenic Rivers Energy Cooperative strives to be a reliable and innovative provider of energy and related services. Our cooperative will proudly serve our customers by:

- Encouraging member involvement.
- Promoting appropriate growth for our cooperative and community.
- Serving as a strong advocate for effective policy at all levels of government.
- Educating the community, especially youth, about cooperatives.