



# 3RD GRADERS SHARE SAFETY TIPS DURING ELECTRICAL SAFETY MONTH IN MAY

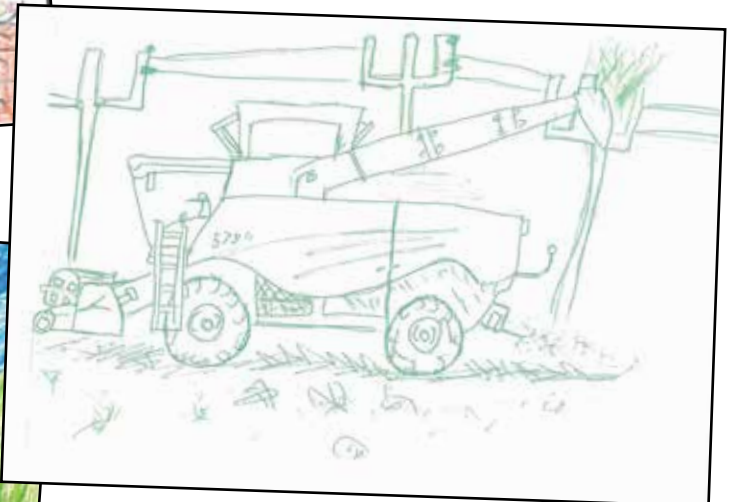
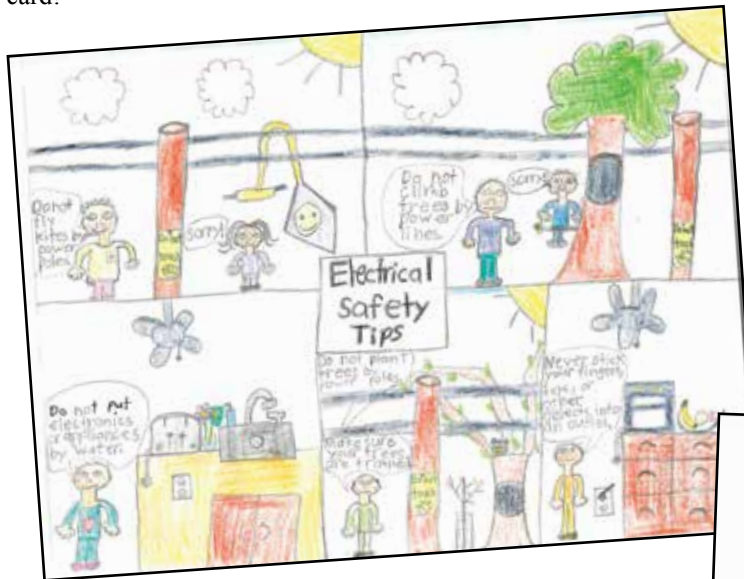
Our talented 3rd grade members sent in some great entries for the Electrical Safety Poster Contest in honor of Electrical Safety Month in May. With so many great entries, we couldn't choose just one—so we selected the top three winners to receive a \$25 gift card! Additionally, these three winners had their posters submitted to the Wisconsin Energy Cooperative Association (WECA)'s statewide contest for their chance to win a Chromebook, \$100 gift card, or \$75 gift card. In that contest, Lydia tied for 2nd place, winning a \$100 gift card!

These young artists' artwork reminds us how important it is to stay safe around electricity - both indoors and while working and traveling outdoors.

Electrical safety is an important topic that should be discussed with children as soon as they begin to walk and explore their surroundings.

The conversation shouldn't stop there. Adults play an essential role by leading through example and practicing safe habits around electricity every day. Simple things like staying away from sagging or downed power lines, keeping equipment away from overhead power lines, and throwing away damaged power cords can make a big impact when preventing injuries.

It is never too early or too late to talk to your children about electrical safety and encourage everyone in your home to follow safe practices.



## SREC Winners

- Lydia Junk, Bloomington (top)
- Connor Chambers, Lancaster (right)
- Benjamin Snyder, Hazel Green (bottom)



## VEGETATION MANAGEMENT **BEHIND THE SCENES**

Trees beautify our neighborhoods and give homes to wildlife and, when planted in the right spot, can even help lower energy bills. But the wrong tree in the wrong place can be a hazard, especially to power lines. Pictures from SREC contractor, Zielies Tree Service show our service territory before, during, and after vegetation management. Without a cleared path around and under our lines and equipment, outages are longer and our crews are faced with additional hazards.





# WHY VEGETATION MANAGEMENT MATTERS

There's something timeless about trees. They ground us. They remind us of where we've been, and they stretch toward what's ahead. Here in our community, we take pride in the natural beauty that surrounds us—the shade on a summer afternoon, the colors that mark the changing seasons, the quiet strength of something that grows slowly but endures.

At the same time, we share another responsibility—one that's just as essential to our daily lives. The responsibility to keep the lights on, to power our homes and businesses, to make sure that when you flip a switch, the energy you depend on is there.

That's why Scenic Rivers Energy Cooperative (SREC) works every day to strike a careful balance between preserving the beauty we cherish and delivering the reliable electricity you expect.

One of the most important ways we do that is through regular tree trimming.

## Why Trim Trees?

Now, it may not always be obvious, but keeping lines clear of overgrown vegetation plays a major role in preventing power outages. We've all seen what can happen when severe weather rolls in—strong winds, heavy ice, or sudden storms can bring down branches and, with them, power lines and poles. In fact, nearly half of all power outages can be traced back to trees and vegetation coming into contact with electrical infrastructure.

That's why you may notice crews from SREC or our trusted contractors, Zielies Tree Service, working in neighborhoods throughout the year. Our crews are trained and certified to ensure the job is done safely and effectively. Their work might seem routine, but it's anything but—it's a proactive step that helps prevent problems before they start.

And it's not just good practice—it's required. Electric utilities across the country are obligated to manage vegetation near power lines. Scheduled trimming helps remove dead or weakened limbs and keeps fast-growing trees from becoming hazards. It's about staying one step ahead, especially as we prepare for the increasing frequency and intensity of severe weather events.

But beyond reliability and efficiency, there's another reason this work matters: safety.

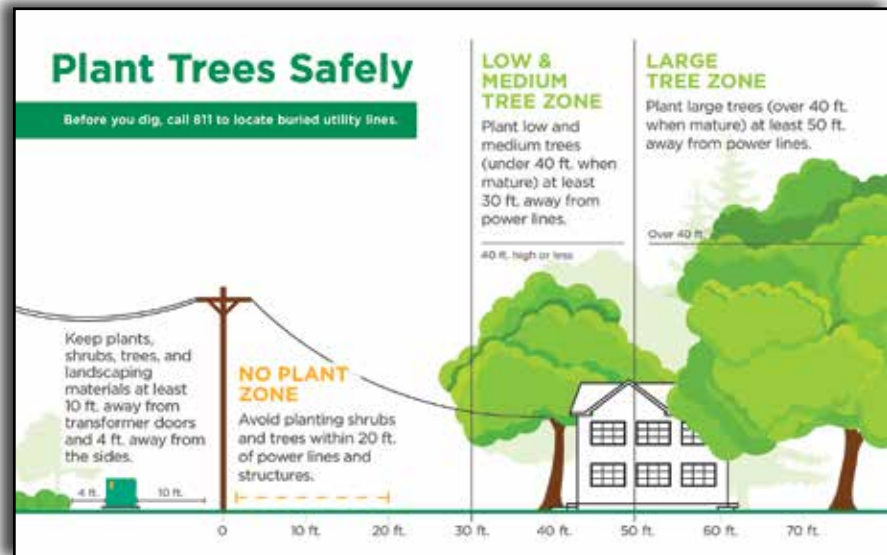
Electricity is a powerful force, and when trees grow too close to power lines, that power can become dangerous. Branches that touch lines—or even come close—can carry electrical current. Children climbing trees in their own yards may not realize the risk. And during storms, fallen trees can

create hazardous conditions not only for families but also for our lineworkers working to restore service.

There's also a financial reality we can't ignore. Preventative maintenance—like tree trimming—is far more cost-effective than repairing widespread damage after an outage. Left unchecked, overgrown vegetation can lead to more frequent disruptions and higher costs for everyone. A thoughtful, strategic vegetation management program helps keep those costs down for our members.

## Plant Wisely

You can help, too. When planting new trees and shrubs, consider their mature height and distance from nearby power lines. Plants and shrubs should be planted at least 30 feet away from power lines and poles. Trees that grow up to 40 feet should be planted at least 30 feet away from overhead lines. Larger trees—those that exceed 40 feet—should be planted at least 50 feet away. If you're landscaping near pad-mounted transformers, keep plants, shrubs, trees and landscaping materials at least 10 feet from the front and 4 feet from the sides to allow safe access.



If your neighborhood has underground lines, don't forget to call 811 before digging. It's a simple step that can prevent serious accidents.

At the end of the day, we all want the same thing: a community that's safe, resilient, and beautiful. At SREC, we're proud to be part of that effort. Our roots run deep here, just like the trees we work to care for.

More information about our vegetation program can be found on our website at [sre.coop/row](http://sre.coop/row), or by contacting us at 800-236-2141.

# BE ALERT FOR PEAK ALERTS

Summer peak alert season is here. Help ease the strain on the electric grid this summer by being mindful of your usage—especially on a peak alert day.

## What is a Peak Alert?

When extreme temperatures drive up the demand for electricity across the regional grid, our generation and transmission company, Dairyland Power Cooperative, sends out a Peak Alert notification asking members to limit their usage between the hours of **2:00 p.m. and 6:00 p.m.** Peak alerts typically occur on the hottest days, when the electricity demand—and costs—are highest.

By reducing or delaying your energy usage on these hot summer days, you help SREC lower wholesale power costs, which means savings that are passed to you, our members.

## Stay Informed

Peak alerts are broadcast over these local radio stations:

- WVRQ 102.3 FM
- WGLR 97.7 FM
- WPRE 104.3 FM
- WBGR 93.7 FM
- WQPC 94.3 FM
- WPVL 107.1 FM


Peak alerts are also posted on our Facebook page. Watch for images similar to the one shown on the right when a peak alert is issued. If you don't already, follow us at [www.facebook.com/sre](http://www.facebook.com/sre).



## Every Action Helps

You can help control costs by reducing or delaying your electricity usage on these hot summer days. Small acts such as turning the air conditioning up a few degrees during the peak hours, doing laundry or dishes before or after peak hours, and turning off unnecessary lights and appliances are all small actions that help reduce the strain on the electric grid.

Together, we can make a meaningful impact this summer.



## ENERGY EFFICIENCY TIP OF THE MONTH

Running multiple major appliances at the same time—like your dishwasher, laundry machines, and oven—can spike energy demand and strain the electric grid, especially during peak hours (typically late afternoon to early evening). Instead of stacking appliance use, spread it out throughout the day or shift chores to off-peak hours when energy demand is lower. This not only helps improve overall efficiency but can also reduce your energy costs. A simple habit change, like doing laundry in the morning and running the dishwasher overnight, can make a meaningful difference for both your wallet and energy reliability.



## MEMBER PHOTO OF THE MONTH



“Freedom” is this month’s featured photo from Mia Cook, daughter of Alaina & Zach Cook, members in Prairie du Chien, Wis.



## Jason Knapp, CEO

206 County Road K  
Lancaster, WI 53813  
800-236-2141 • 608-723-2121  
E-mail: [srec@srec.net](mailto:srec@srec.net)  
Website: [www.sre.coop](http://www.sre.coop)  

*This institution is an equal opportunity employer and provider.*