



Steve Lucas, CEO

# CELEBRATING MEMBERSHIP

## October is National Co-op Month

Fall is a busy time, and October is a particularly eventful month with school, community, and sports activities in full swing. It's also when all cooperatives celebrate National Co-op Month.

When I say Scenic Rivers Energy Cooperative celebrates Co-op Month, it really means we are celebrating you! After all, our co-op wouldn't exist without you, our members.

Similar to how our wires run through our service territory, our concern for community flows through all of our decisions—because being a co-op means being a responsible partner and good neighbor.



**Concern for Community** We're proud to support local youth through our Youth Leadership Congress (featured in September's magazine), the Youth Tour to Washington, D.C. in June, and our scholarship program where we award 52 area students with \$1,000 each. With your help, we coordinate the Operation Round Up funds to provide assistance to our community's most vulnerable through annual cash donations to:

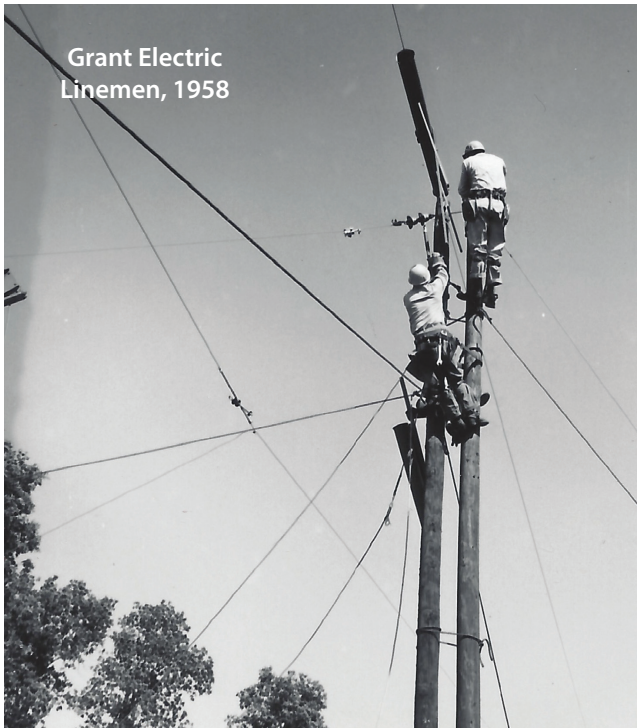
- 16 area foodbanks;
- 74 area Fire/Rescue/EMT departments;
- 6 Hospitals and Clinics; and more.

**Helping You Save** Above all, as a co-op we put our members' priorities first. As your trusted energy partner, we know that saving energy and money is important to you. That's why we have numerous programs in place to help. By partnering with Focus on Energy and Dairyland Power Cooperative, we have many rebates and instant savings programs that can help our members lower their monthly use and bills. Visit our website to learn more or call us for more details, [www.sre.coop](http://www.sre.coop) or 800-236-2141.

We want to empower you to manage energy use at home. If you haven't already, I encourage you take a moment and download our app, SmartHub. Through the app, you can conveniently monitor and manage your energy use. And we're of course here to help, so give us a call if you have questions about your energy bills.



**Working for You** Scenic Rivers Energy Cooperative is continuously examining ways to operate more efficiently while continuing to provide the highest level of friendly, reliable service you expect and deserve. After all, we're your local co-op. We were built by the members we serve.



# WE OUR MEMBERS

Last year we awarded \$10 bill credits  
to 492 members like T. Jones.

“ Just wanted to thank SREC for the recent \$10.00 gift certificate off my current billing. Very much appreciated! I have been a member of this Co-op for over 20 years and they have been awesome to work with. Keep up the great work and have a wonderful fall! Sincerely, T. Jones ”

So, we're doing it again! Members will be entered into a daily drawing for \$10 bill credits. Each day we'll randomly draw our winners. Day 1 = 1 winner; day 2 = 2 winners; day 3 = 3 winners; until October 31, when we'll draw 31 winners of \$10 each! In total, we'll award 492 members with random bill credits. Each member can only win once, and will be notified by phone. Prizes will appear on your November 2022 bill statement. Want to know who wins? Like us on Facebook to see the daily winners announced.



Co-op Month is a perfect time to say “Thank You” to our members. To be a strong cooperative, we need each and every member on our lines, every day. By working together, as a community, we've built more than miles and miles of lines and poles; we've built a community.

## Our Gift to You

We're sending you a special gift this year—one that is filled with the beautiful winning photos from our annual member photo contest, important dates to remember, and tips you can use throughout the year. All the winners are members of SREC and you'll see a familiar name or two when you open your calendar. There wouldn't be a calendar without our members, and this calendar is our gift you. We hope you'll enjoy the Bright and Shiny Faces from across our service territory.





# CAPITAL CREDITS = CASH BACK FOR OUR MEMBERS

As a member of Scenic Rivers Energy Cooperative (SREC), you may have heard the term “capital credits” before and wondered what it meant. Additionally, there is a capital credit patronage allocation and a retirement of capital credits, further mudding the water. And, what are margins? And, what does it all mean to you? Let’s make it easier.

- **Member** – that’s you, or whomever signed the membership form when you first started receiving electricity from SREC.
- **Margins** – are the income minus expenses for each year and are distributed proportionately to active members based on total electricity used that same year.
- **Capital Credit Patronage Allocation (CCPA)** – noted on your September bill statements, this represents your previous year’s share of the SREC margins. This is not cash back and has no cash value...yet.
- **Capital Credit Retirements** – when it is financially feasible, the Board of Directors will retire previously allocated margins which equals cash back for you!

At a recent meeting, the Board of Directors voted to retire a percentage of the previously allocated capital credits from 1995 through 2018. If you are a current SREC member, your cash back appears on your October bill statement as a credit. If you are no longer an active member, a check will be mailed to your last known address.

If you would like to know more about capital credits = cash back for our members, please contact us at 1-800-236-2141. Thank you for being a member of SREC and making our cooperative stronger.

Grab your bill  
and look for your  
cash back credit  
or watch your  
mail for a check.

## *Where is my Cash Back?*

If you think you should have received a cash back check in the mail but didn’t, please call us during regular business hours (Monday – Thursday, 6:30 a.m. to 4:30 p.m.). It is possible we do not have your current mailing address.

## *What happens to unclaimed funds?*

SREC makes a diligent effort to return all allocated capital credits back to our current and former members as state law requires. However, if we cannot locate a member, after three years, the funds become “unclaimed” and are placed in our Federated Youth Foundation account. Funds in this account are then used strictly to award college scholarships and fund youth activities and youth education programs throughout our service territory that benefit our member-owners.

### HOW CAPITAL CREDITS WORK



SREC calculates  
annual margins.



SREC Board of  
Directors authorizes  
the Capital  
Credit Patronage  
Allocation (CCPA).



Eventually, CCPAs  
are retired which =  
Cash Back for our  
members.



## CONGRATS TO OUR CALENDAR PHOTO CONTEST WINNERS!

Thank you to all the members who submitted photos for our annual calendar. We focused on bright and shiny faces and as you will see, the winning photos are a great representation of many kinds of faces. Congratulations to the following photographers (in no particular order) whose work will be featured in this year's calendar:

John J. Dalsing, Cuba City	Craig Grau, Livingston
Leah Granzow, Steuben	Kathy Miller, Cuba City
Anna Schultz, Gratiot	Mark Hackett, Boscobel
Ken Fleege, Cuba City	Justin Miller, Platteville
Deb Gates, Eastman	Jamee Stanley, Soldiers Grove
Anna Robbins, Benton	Mark Steffensmeier,
Bobbi Gofus, Bagley	Bloomington
Cathie Skaife, Platteville	Rhonda and Richard
Rebecca Kruse, Argyle	Wiedenbeck, Lancaster

## MEMBER PHOTO OF THE MONTH



The winning photo for October in SREC's 2022 Member Photo Contest is "Chopping Corn" by Jake Miller of Platteville. Winning photos are featured in our 2022 Member Photo Calendar.

## Energy Efficiency Tip of the Month

If you can see daylight around a window frame or if you can rattle a window (movement means possible leaks), the window likely needs to be sealed.

Most window leaks can be sealed with caulk or weatherstripping, which come in a variety of compounds and materials. Visit [www.energy.gov/energysaver](http://www.energy.gov/energysaver) to learn how and where to seal air leaks

Source: [energy.gov](http://energy.gov)

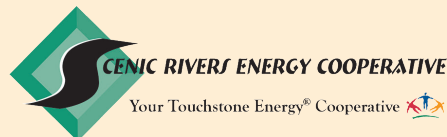


Halloween is Monday, October 31. Be sure to know when your community trick-or-treating is scheduled.

## DECORATE SAFELY

Plug outdoor electric lights and decorations into outlets protected by ground fault circuit interrupters (GFCIs).

**Safe Electricity.org**



206 County Road K  
Lancaster, WI 53813  
[lancaster@srec.net](mailto:lancaster@srec.net)

300 Barth Drive  
P.O. Box 127  
Darlington, WI 53530  
[darlington@srec.net](mailto:darlington@srec.net)

15985 St. Hwy. 131  
Gays Mills, WI 54631  
[gaysmills@srec.net](mailto:gaysmills@srec.net)

**Steve Lucas, CEO**  
**Judy Mims, Editor**

## Board of Directors

Chuck Simmons, Chairman  
Sandra Davidson, Vice Chair  
Steve Carpenter, Secretary-Treasurer  
Donald Schaefer, Asst. Secretary-Treasurer  
Ellen Conley, Director  
Lily Long, Director  
Delbert Reuter, Director  
Jack Larson, Director  
Marcus Saegrove, Director

**608-723-2121 • 800-236-2141 • [www.sre.coop](http://www.sre.coop)**

*This institution is an equal opportunity employer and provider*